

*FROM THE DIRECTOR'S DESK*



*At this time of the year, our thoughts turn with deep appreciation to our residents who support us in all that we do in service to our community.*

*In this spirit we say simply and sincerely, may all have a joyous Holiday Season and a wonderful New year filled with peace and happiness.*

*The Trustees, Director, and Staff*



*Our Friday Afternoon Book Discussion continues with Leader Harriet Klein*

**January 16 2 PM Resident sign-up December 5**

**Nonresident sign-up December 12**

*Glass Castle: A Memoir by Jeannette Walls*

Journalist Jeannette Walls tells the story of her nomadic upbringing in the southwest. Her parents were nonconformists who often let their children fend for themselves. Despite this, she now has a successful career and describes her family life with affection. Did her experiences make her stronger?

*Pick up a copy of this book at the Reference Desk. Limited to 15*

*How to Grieve Your Property Taxes sponsored by Legislator Rose Walker  
and the Assessment Review Commission*

**Tuesday, January 27 6:30-8:30 PM**

**Free tickets available January 6**

Members of the Assessment Review Commission of Nassau County will present a power point demonstration of the steps needed to complete a grievance application. The Commission will bring the forms for 2016-2017 and show you what information you will need to fill them out properly at home.

*The filing period is January 2 through March 2, 2014, so stop by. Limit 80*

*Holiday Cooking with a Latin Beat*

*Presented by Chef Lucy Van Horn*

**Tuesday, December 9 6:30 PM Sign-up in progress**

Lucy Van Horn brings a Latin flavor to your holiday party! She will start with a delicious black bean dip. Next will be a salsa with fruit served over salmon, then a Latin style chicken salad hors d'oeuvres. She will end with two desserts— a fruit bowl with a touch of sangria sauce and pound cake with dulce de manjar. Limit 20



**FITNESS COURSES (Please Pay By CHECK Only!) NO REFUNDS! NO PRORATING OF FEES!**

We offer **on-going classes** for Zumba & Yoga. Check for availability at the Circulation Desk.

**YOGA (Limit 18 per class)**

**Monday Morning (10-11:30 am) \$65**

Instructor: Edith Jason, (E-RYT 500)

Class starts: 1/5 ends: 3/2

8 Sessions (No class: 2/16)

Resident sign-up 12/8 Nonresident 12/15  
Limit 18

**Wednesday Morning (10-11:30 am) \$65**

Instructor: Bette Collom, (Kripalu Certified)

Class started: 11/12 ends: 1/21/15

(No class: 11/26, 12/24, 12/31)

8 Sessions

Sign-up in progress for all  
Limit 18

**Thursday Evening (5:30-7 pm) \$65**

Instructor: Edith Jason, (E-RYT 500)

Class starts: 12/18 ends: 2/19

8 Sessions (No class: 12/25, 1/1)

Resident sign-up 12/4 Non-resident 12/11  
Limit 18

We invite you to join your Library's Yoga classes and experience this unique system of exercise. **Beginners and experienced students are always welcome.** You may work at your own level. Firm, tone and strengthen your body while reducing stress. It is best not to eat within 2 hours before the start of class. Please dress comfortably and bring a tapas yoga mat, a tie or strap, 2 yoga blocks and a small throw pillow. Classes run continuously (unless otherwise noted) throughout the year. **PLEASE NOTE: This course is not appropriate for pregnant women.** Limit 18

**STRENGTH, FLEXIBILITY & BALANCE**

**Monday Afternoon (2:30-3:30 pm)\* \$22**

Instructor: Barbara Gilmartin,  
(Certified National Gym Association  
Personal Trainer)

Class started: 11/10 ends: 12/29  
8 Sessions

Sign-up in progress for all  
Limit 25

\*Please bring appropriate hand weights

**ZUMBA**

Zumba Fitness

**Wednesday Evenings (6:45-7:30 pm) \$45**

Class starts: 12/10 ends: 2/11

8 Sessions

(No class 12/24, 12/31)



Sign-up in progress for all

Limit 25

Zumba Tone Fitness

**Saturday Mornings (10-10:45 am) \$45**

Class starts: 1/10

Class ends: 3/7

8 Sessions

Resident sign-up 12/27  
Nonresident sign-up 1/3  
Limit 25



**ROTATIONAL ART EXHIBIT FOR DECEMBER**

Crafts made by Shirley Foley, presented in loving memory by Jim Foley.

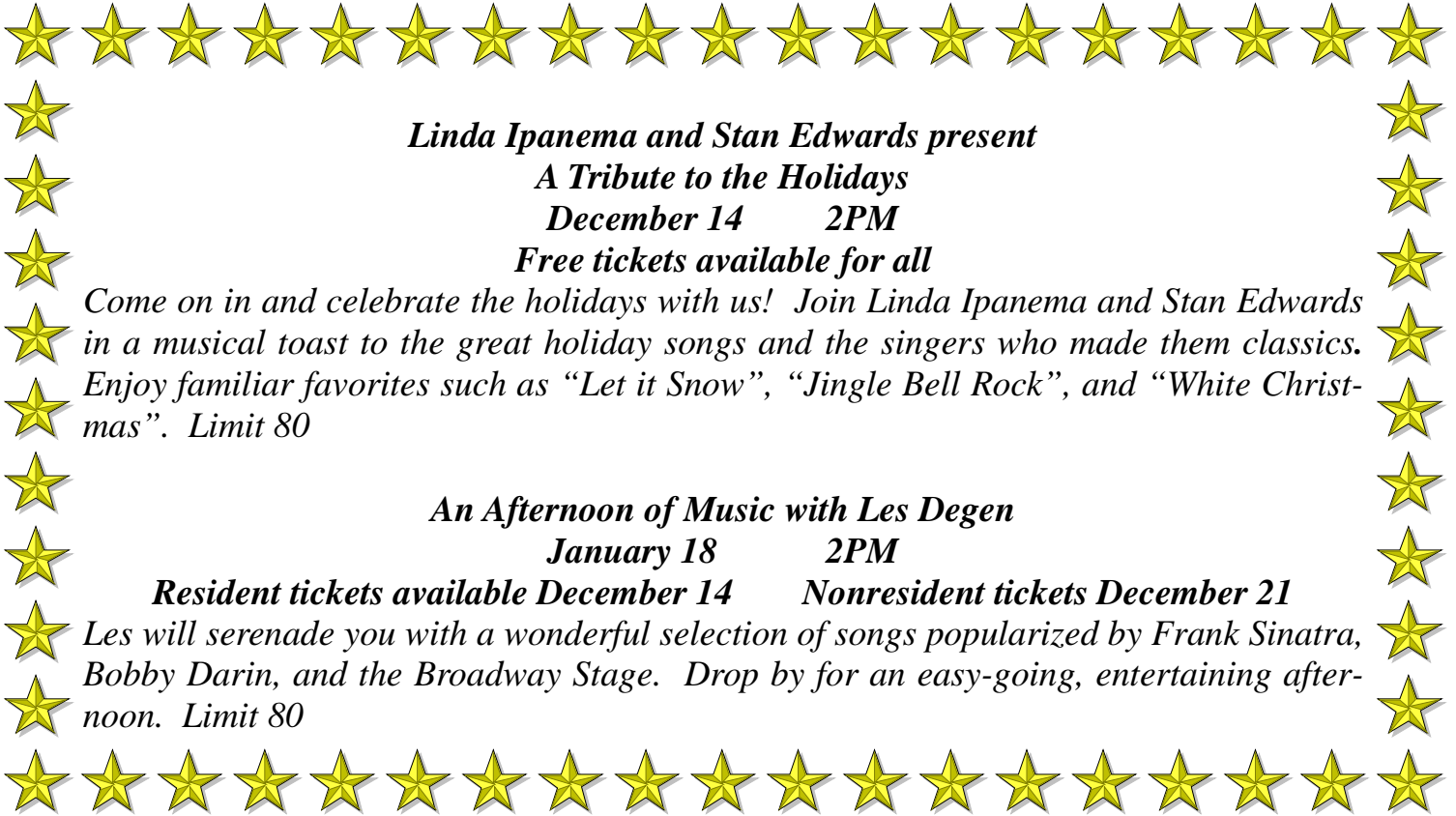
**Senior Citizen Gold Card Community Outreach Program**

All residents of the Plainedge School District who are 60 years of age or over are eligible for membership in the Gold Card program. Upon receipt of a completed membership form, Seniors will receive a Gold Card in the mail. (Completed forms may be mailed with proof of age or delivered in person to Central Administration). For additional information, please call the District Office at 516 992-7450. Gold card members receive:

- Free admission to District sponsored activities and events
- Invitation to a special matinee performance of the HS musical in the Spring
- A private tour of the District Art Show

**Gold Card Membership Applications are available at the Reference Desk of the Library**

# SUNDAY ENTERTAINMENT



*Linda Ipanema and Stan Edwards present*

*A Tribute to the Holidays*

*December 14 2PM*

*Free tickets available for all*

*Come on in and celebrate the holidays with us! Join Linda Ipanema and Stan Edwards in a musical toast to the great holiday songs and the singers who made them classics. Enjoy familiar favorites such as "Let it Snow", "Jingle Bell Rock", and "White Christmas". Limit 80*

*An Afternoon of Music with Les Degen*

*January 18 2PM*

*Resident tickets available December 14 Nonresident tickets December 21*


*Les will serenade you with a wonderful selection of songs popularized by Frank Sinatra, Bobby Darin, and the Broadway Stage. Drop by for an easy-going, entertaining afternoon. Limit 80*

## DRIVING COURSES

**NOTE:** Please do not park in the Library parking lot, or in front of stores in shopping center. Parking is available on Guttenberg Path, the street located parallel to Hicksville Road.

**AARP DRIVING \$20 AARP MEMBERS /  
\$25 NON-MEMBERS**

**DEFENSIVE DRIVING  
\$32.00**

Event Date	Sign Up Dates
AARP Driving Classes will resume in February 2015	Look for registration dates in our January Newsletter
	

Event Date	Sign Up Dates
Defensive Driving classes will resume in February 2015	Look for registration dates in our January Newsletter

This course for drivers 50 years of age & older is given in one 8-hour session, including a break for lunch. You will also be eligible for percentage discounts on your insurance premiums. If only one spouse is 50 years of age or older, you may both register for this course but you must attend together. Pay **\$20, \$25** if non-member, at registration with undated checks made payable to AARP. If two are attending, we must receive undated checks from each individual wishing to attend. Please note that the fee is non-refundable.

**IMPORTANT: If you are an AARP member, you must write your membership # on your check to receive the reduced rate. Also, please bring your driver's license & a black or blue ink pen.**

This driving course is not limited to those 50 years of age or older. You will also be eligible for percentage discounts on your insurance premiums. Checks only. Please make checks payable to **Plainedge Public Library**. NOTE: If two are attending, we must receive separate checks from each individual wishing to attend.

**Please bring your driver's license and a black or blue ink pen to class.**

**NOTE FOR ALL EVENTS:** Plainedge residents will be given preference registering for all courses and programs requiring sign-up. After 7 days, non-residents will be placed on a waiting list and will be notified if space is available. Refunds can only be issued if your ticket is sold to a replacement.

## CHILDREN'S ACTIVITIES/INFORMATION

Please Note: REGISTRATION FOR CHILDREN'S PROGRAMS IS EXCLUSIVELY ONLINE.

Online registration for all programs & crafts/activities will begin on Monday, December 8 at 10:00a.m. for Plainedge School District residents. Each child you register will need a valid Library card with a PIN established.

To create a PIN: Go to "My Account" at the top of our homepage and click on the "Sign-In (with instructions)" option. To register: Go to our Library's homepage, [www.plainedgelibrary.org](http://www.plainedgelibrary.org) and click on the "Kids Programs" logo.

A current email address is required in order for confirmations to be automatically sent to you about your status, registered or wait-listed.

Out-of-district residents may register online starting Monday, December 15 depending on availability. All programs are age specific, including those where adults attend with children. Please make necessary childcare arrangements.

PLEASE NOTE: The Library may charge materials' fees for Children's programs. In such cases, in person payment is required. After online registration is completed, contact the Children's Services Department at 735-4133 X12 or X13 to set up a time to pay. If payment is not received within seven days of registration, we reserve the right to offer the spot to a child from the waiting list.



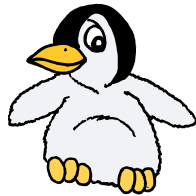
### PENGUIN PILLOWS PROGRAM

Friday, January 2

3:00p.m.-4:00p.m.

Grades 2-5 (Drop off program)

Put together your own penguin designed pillow during the winter break!



### TODDLER PLAYGROUP

Tuesday mornings, January 6, January 13, January 20 & January 27

10:00a.m. - 11:15a.m. or 11:45a.m. - 1:00p.m.

For toddlers 1 to 2 years of age with accompanying adult

Join us for creative movement, dance and plenty of playtime for your toddler. Parents and caregivers stay and participate with their children. *Child needs to be at least one year old by January 6 in order to participate.* No unregistered siblings with the exception of infants, please.



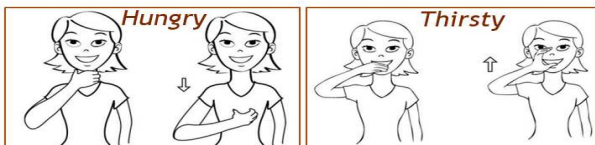
### BABY SIGN LANGUAGE CLASS

For babies 0-23months with accompanying adult

Friday, January 9

10:00a.m.-10:45a.m.

Babies can be given the power of communication! Join Baby Signing Time certified instructor Lisamarie Curley to play games and learn songs. You'll be surprised how many signs you'll learn!



### PRESCHOOL SIGN LANGUAGE CLASS

For children 2-5 years of age with accompanying adult

Friday, January 16

10:00a.m.-10:45a.m.

Did you know that children who sign have stronger literacy skills? Join certified Baby Signing Time instructor Lisamarie Curley to play games and learn songs. You'll be surprised how many signs you'll learn!





## CHILDREN'S PROGRAMS continued

### BOOK BUDDIES

Saturday, January 10

10:00a.m.-10:45a.m.

For Plainedge families



Students from Plainedge High School's National Honor Society will be here to read stories and do a craft with your children.



### WINTER STORYTIME PROGRAMS

When registering, you will be signing your child up for a series of 6 sessions.

#### GET TOGETHER STORYTIME

Ages 2 yrs. - K with accompanying adult

Tuesday evenings, 7:00p.m-7:30p.m.

01/06, 01/13, 01/20,

01/27, 02/03 & 02/10

Adults participate with child/children who are within the required age range. Structured program includes stories, finger play, creative movement and movies or crafts. *Child needs to be at least 2 years of age by January 6 to participate.*

#### WE TOO STORYTIME

Ages 2 yrs.- 3 yrs. & 5 mos.

Wednesdays, 9:45a.m.-10:15a.m.

01/07, 01/14, 01/21,

01/28, 02/04 & 02/11

Adults participate with child/children who are within the required age range. Structured program includes stories, finger play, creative movement and movies or crafts. *Child needs to be at least 2 years of age by January 7 to participate.*

#### PICTURE BOOK STORYTIME

Ages 3 1/2 yrs. - Grade K

Thursdays, 10:45a.m. - 11:15a.m.

01/08, 01/15, 01/22

01/29, 02/05 & 02/12

Children sit and participate by themselves. Parents are welcome to stay in the Children's Room where the program takes place. Program structure similar to "We Two" but geared for the older children. *Child needs to be 3 1/2 years of age by January 8 to participate.*



## BOARD OF TRUSTEES

Laura Oden-Bell  
Ann Doxsey  
Dave Gottlieb  
Ellen Ryder  
Michael Giris  
Marilyn Kappenberg

boardpres@plainedgelibrary.org  
adoxsey@plainedgelibrary.org  
dgottlieb@plainedgelibrary.org  
eryder@plainedgelibrary.org  
mgiris@plainedgelibrary.org  
**Library Director**

Non-Profit Org  
U.S. Postage  
PAID  
Massapequa, NY  
Permit No. 12

1060 Hicksville Rd; Massapequa, NY 11758-1289  
Phone: (516) 735-4133 Fax: (516) 735-2510  
Website: www.plainedgelibrary.org

Michael Dietz - Newsletter Publisher  
Maureen Hopper—Program Coordinator & Editor

### LIBRARY HOURS

Monday - Thursday	9:00 a.m. - 8:45 p.m.
Friday	9:00 a.m. - 5:45 p.m.
Saturday	9:00 a.m. - 4:45 p.m.
Sunday	1:00 p.m. - 4:45 p.m.



### HOLIDAY

December 24 (Christmas Eve)	9:00 a.m. - 1:00 p.m.
December 25 (Christmas Day)	Closed
December 31 (New Year's Eve)	9:00 a.m. - 1:00 p.m.
January 1 (New year's Day)	Closed

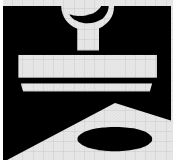
# DECEMBER 2014

**Please note:** The Board of Trustees meets monthly, usually the third Monday of the month, at 7:00 p.m., in the Local History Room. **The next Board Meeting is scheduled for December 15, 2014.** All meetings are open to residents of the community and all interested individuals are invited to attend.

### NEW DVD LOAN PERIOD!

*In an effort to better serve our patrons, the DVD loan period has been changed from 2 to 3 days.*

### AT YOUR SERVICE



#### The NOTARY PUBLIC hours are:

**Monday:** 10 am - Noon, 6-8 pm

**Tuesday:** 6-8 pm

**Wednesday:** 10 am-12 pm

**Thursday:** 2-4 pm

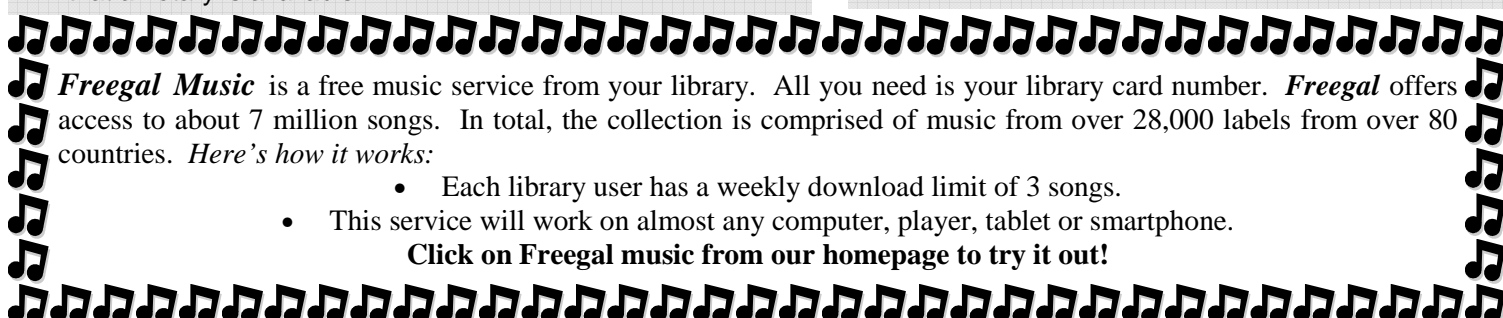
**Friday:** 10 am-Noon & 2-4 pm

**NOTE:** Photo identification required. Documents to be notarized **must** be signed at time of notarization, *not* before. You must bring your own witness if needed. Please telephone the Library to confirm that a notary is available.

## Senior Connections

Our Senior Connections Volunteer, Rosemary Styne, will be available to assist with questions and services for seniors on Monday, December 8. Please call ahead for availability.

**Senior Citizen Watch** for upcoming events will be sponsored by Plainedge H.S. If interested, please call



**Freegal Music** is a free music service from your library. All you need is your library card number. **Freegal** offers access to about 7 million songs. In total, the collection is comprised of music from over 28,000 labels from over 80 countries. *Here's how it works:*

- Each library user has a weekly download limit of 3 songs.
- This service will work on almost any computer, player, tablet or smartphone.

**Click on Freegal music from our homepage to try it out!**